

**Antigo™**

FABRYKA LAMP

www.antigo.pl

# SURIKA

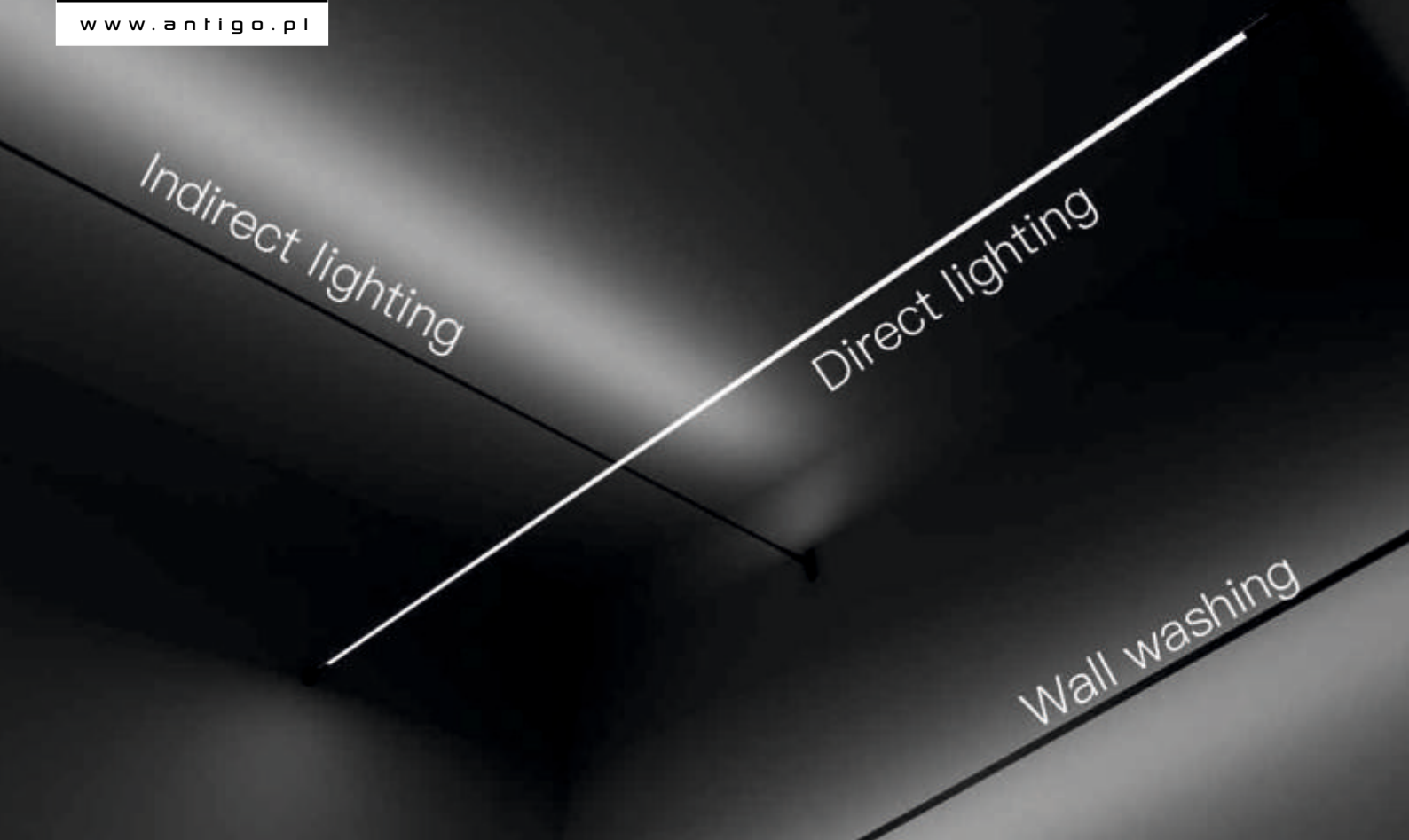


\*Images for reference only

## Features:

- Flexible and convenient installation, Minor modifications to the walls.
- High quality material, Zinc alloy+stainless steel composition, Strong and durable not easy to deformation.
- Fixed rod can be adjusted by 45° More possibilities, Suitable for direct, Indirect lighting, Wall washing lighting and other applications.
- Steel strip can up to 25m, Which can perfectly adapt to the lighting decoration of large space.





#### Accessories:



Wall Base Holder

+



STEEL BAND

=



+ Led stripe  
+ Power adapter

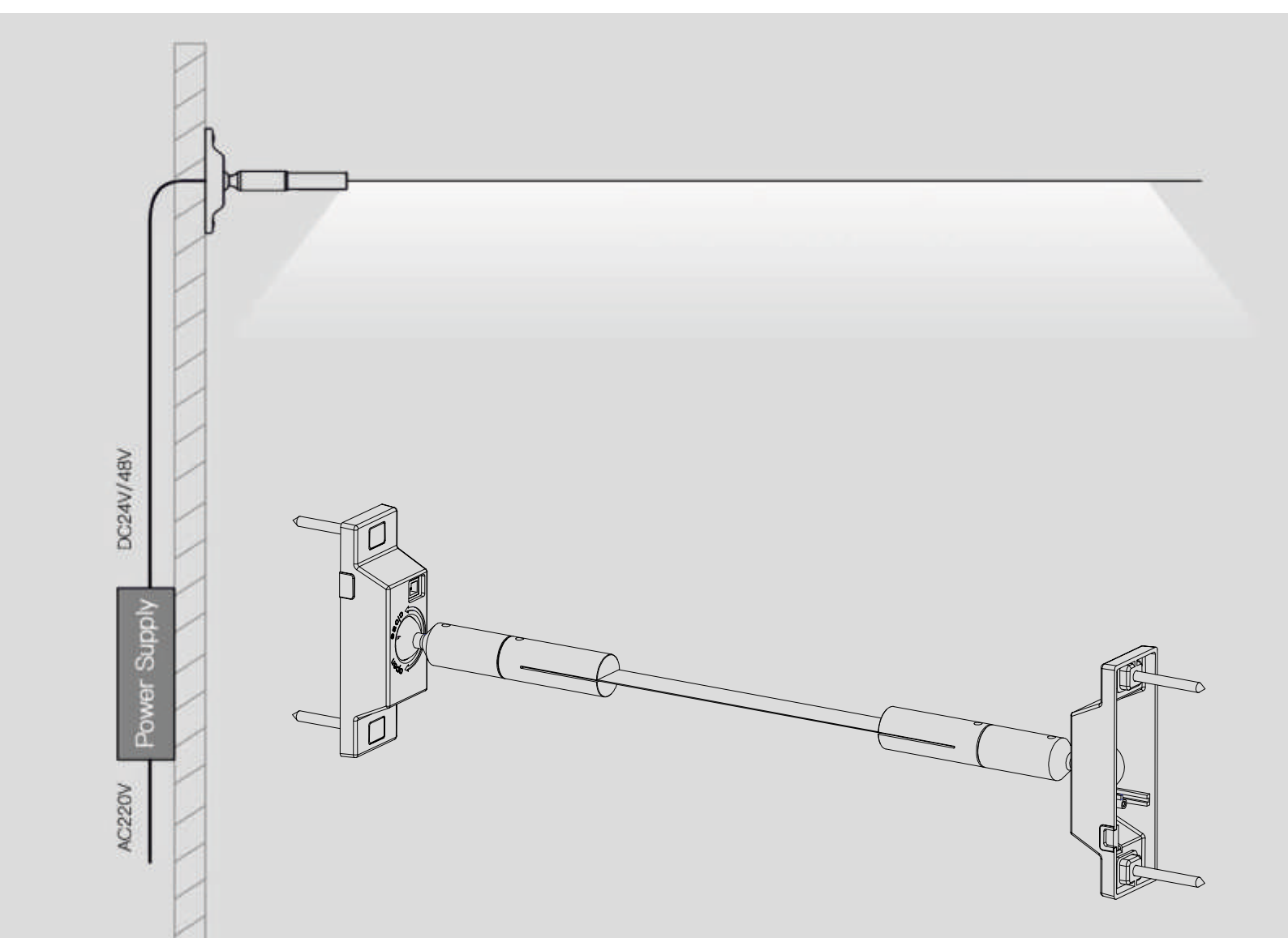


Wall Base Holder

+

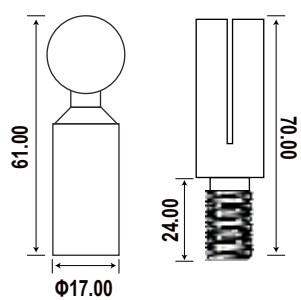


STEEL BAND

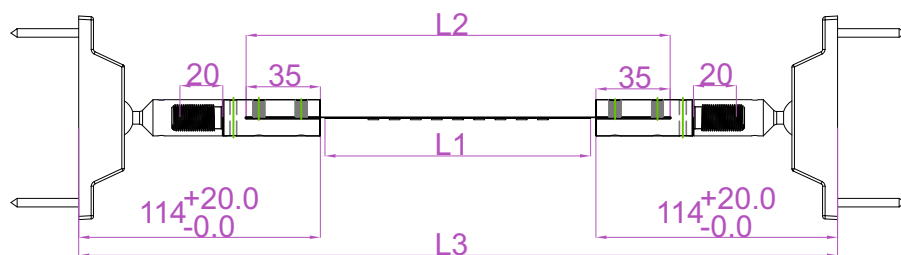
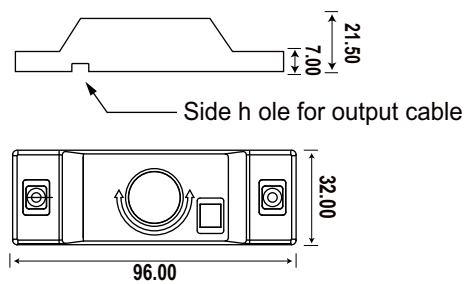


## Size:

Screw Shaft / Cardan Shaft



Cardan Shaft Base



- L1: Length of led strip
- L2: Length of steel band
- L3: Length between two walls

$$L1 = L3 - (228\text{mm} \sim 268\text{mm})$$

$$L2 = L3 - (158\text{mm} \sim 198\text{mm})$$

## Connection Diagram:



### Step 1

Products include screw shaft, Cardan shaft, base, Fixing Screws.



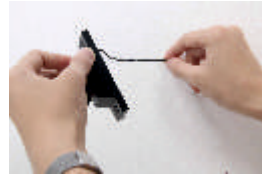
### Step 2

Drill holes in advance at the outlet of the wall.



### Step 3

Take out the base and put the screw throughout the hole in the base.



### Step 4

Connect the power supply PCB on the base with the outlet connector of power supply on the wall.



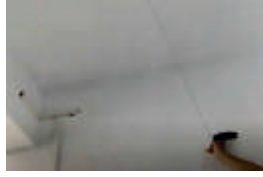
### Step 5

If it is inconvenient for the power supply to go out from the wall, you can connect to power supply through the outlet port reserved on the side.



### Step 6

Open the base plug, Take out the screw and fix it on the drilled wall. Repeat the operation on the other end.



### Step 7

Use the tool to measure the distance between two walls.



### Step 8

Cut the steel band based on the necessary length, and then stick and fix the light strip on it.



### Step 9

Connect the screw to the steel belt with screws.



### Step 10

First screw into the connector without power supply.



### Step 11

When connected with one end of the power supply, Hold the screw and twist one end of the universal shaft to tighten the steel belt.



### Step 12

Plug the led strip connector into the female base connector, Take out the screw and fix it on the drilled wall. Repeat the operation on the other end.